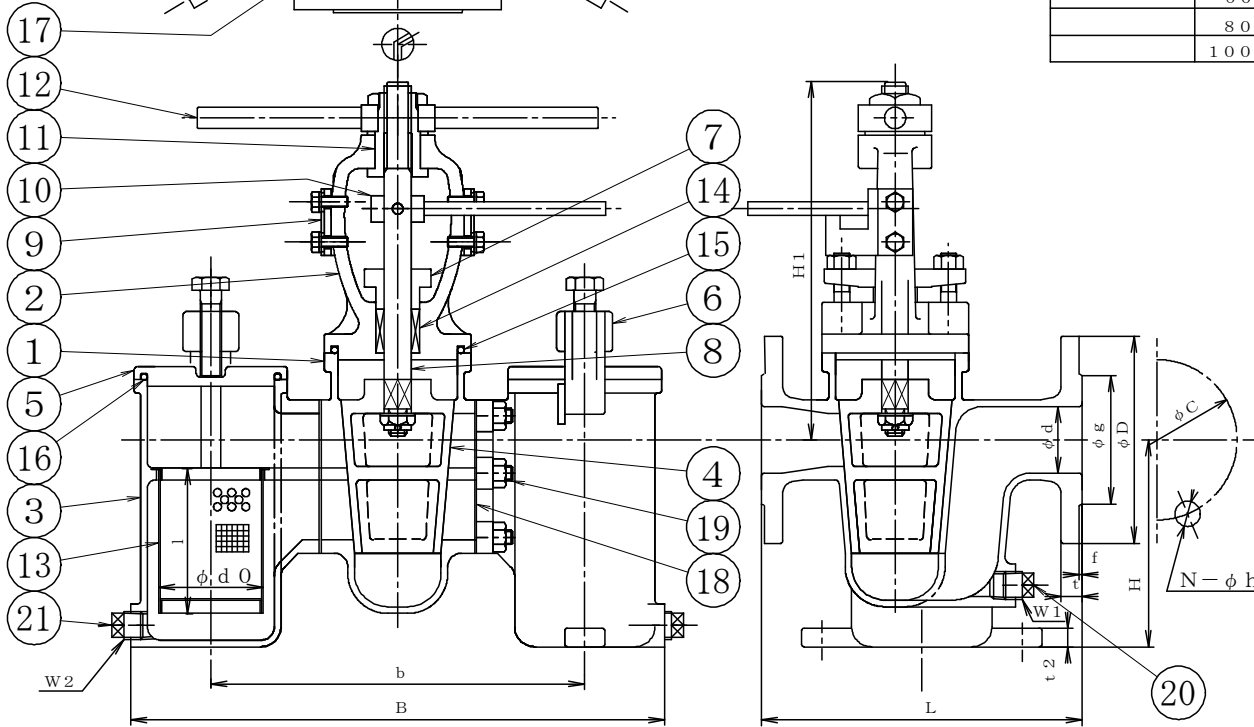
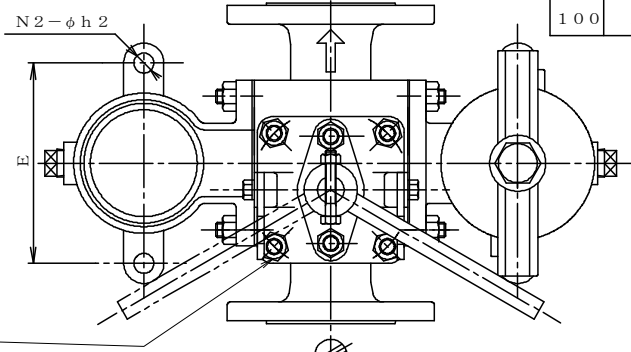


SIZE	d	L	FLANGED								H	H1	d <sub>o</sub>	l	B	b	E	t <sub>2</sub>	N <sub>2</sub>	h <sub>2</sub>	W <sub>1</sub>	W <sub>2</sub>	WEIGHT K <sub>g</sub>
			D	C	g	f	t	N	h														
40	1 1/2	50	240	140	105	81	2	16	4	19	155	275	78	110	400	280	150	14	4	15	R3/8	R1/2	35
50	2	50	240	155	120	96	2	16	4	19	155	275	78	110	400	280	150	14	4	15	R3/8	R1/2	35
65	2 1/2	80	330	175	140	116	2	18	4	19	210	318	104	150	580	420	180	14	4	15	R1/2	R3/4	80
80	3	80	330	185	150	126	2	18	8	19	210	318	104	150	580	420	180	14	4	15	R1/2	R3/4	80
100	4	100	380	210	175	151	2	18	8	19	255	375	132	190	700	500	220	20	4	19	R1/2	R3/4	125



SCREEN	
	MESH
	20 MESH
	40 MESH
	60 MESH
	80 MESH
	100 MESH

21	PLUG	SUS316	2	
20	PLUG	SUS316	1	
		20 MESH		
		40 MESH		
		60 MESH		
		80 MESH		
		100 MESH		
19	BOLT NUT	SUS304	SET	
18	GASKET	V#7010	2	
17	BOLT NUT	SUS304	4SET	
16	O-RING	FPM	2	
15	O-RING	FPM	1	
14	GLAND PACKING	V#7233	1SET	
13	SCREEN	SUS316	2	
12	LEVER HANDLE	SUS304	1	
11	SLEEVE	C6782	1	
10	LEVER	SUS304	1	
9	STOPPER	SUS304	2	
8	STEM	SUS316	1	
7	GLAND	SCS14A	1	
6	YOKE	SCS13A	2	
5	COVER	SCS14A	2	
4	DISC	SCS14A	1	
3	SCREEN BOX	SCS14A	2	
2	BONNET	SCS14A	1	
1	BODY	SCS14A	1	
No	NAME OF PART	MATERIAL	Q.T.Y	REMARKS

NAME 10K  
FLANGED U TYPE STRAINER

FLUID	DESIGN PRESSURE	0.7 MPaG	TEST PRESSURE	BODY	
				(HYD)	1.05 MPaG
				SEAT	
				(HYD)	0.7 MPaG
				(AIR)	— MPaG
				(HYD)	— MPaG
				(AIR)	— MPaG

DRAWING No \_\_\_\_\_ MODEL No 10FUW-14A

DATE	A. P	C. K	D. S	D. W
SEP. 1, 2006	MORITA	MORITA	MORITA	HISAKA

No	DESCRIPTION	DATE	A. P	C. K	D. W
REVISIONS					